



**MINUTES OF STUDY COURSE'S COUNCIL  
1<sup>st</sup> December 2025**

On Monday 1<sup>st</sup> December 2025, at 1pm, the Study Course's Council of the Master's Degree Course in Medicine and Surgery took place in classroom Y (Polo Murri) and through Microsoft Teams (link: [SCC Medicine and Surgery December 1st, 2025 1pm | Partecipazione alla riunione | Microsoft Teams](#)). The Council was summoned by Professor Simona Magi, President of the Course, via email on 24th November, 2025, in order to discuss the following agenda:

1. Announcements by the President
2. Acknowledgement of the minutes from previous meeting
3. Quality Assurance Systems
4. Didactic Activity
5. Student Practises
6. Any other business

At 1:05 p.m. Professor Simona Magi, acknowledging all the justified absences (5), attendances, and the legal number (attach. 1) calls the meeting to order.

Jessica Amicucci and Nadia Canonico attend the meeting as administrative support.

**1. Announcements by the President**

**1. White Coat Ceremony**

The White Coat Ceremony for the Single-Cycle Master's Degree in Medicine and Surgery (ITA and EN) will be the **25th of February 2026 at 2:00 p.m.**

**2. Italian language test**

The Italian language tests were held on two dates. Several students received a score below the passing mark. Although the grade is not decisive for passing the skill, we encourage students to practice the language.

The Italian lesson dates for this semester have been published on the course website (<https://www.medicina.univpm.it/?q=news-1>).

**Presidente del Corso: Prof Magi Simona**

Dip. Scienze Biomediche e Sanità Pubblica - Università Politecnica delle Marche

Tel. 071 220 6040

Email: [s.magi@univpm.it](mailto:s.magi@univpm.it)

**Segreteria: Gestione Erogazione Didattica e Attività Professionalizzanti**

Tel. 071 2206188 - 6047

Email [gedap.medicina@univpm.it](mailto:gedap.medicina@univpm.it)



2. **Acknowledgment of the minutes from previous meetings**

The President submits the minutes of the previous Study Course Council for acknowledgement. The Study Course Council acknowledges.

3. **Quality Assurance Systems**

Professor Magi presents to the Council members the data dashboard concerning the average delay in taking exams and the average exam grade. The first activated cohort is currently the one showing the highest delay, while an improvement is observed in the subsequent years.

The President highlights that discussions have been initiated with students to better understand the reasons for these delays. In particular, the cohort with the greatest delay reported that this is mainly due to the structure of the exams, which are grouped into modules and the attendance requirement.

**Presidente del Corso: Prof Magi Simona**

Dip. Scienze Biomediche e Sanità Pubblica - Università Politecnica delle Marche

Tel. 071 220 6040

Email: [s.magi@univpm.it](mailto:s.magi@univpm.it)

**Segreteria: Gestione Erogazione Didattica e Attività Professionalizzanti**

Tel. 071 2206188 - 6047

Email [gedap.medicina@univpm.it](mailto:gedap.medicina@univpm.it)



Facoltà di Medicina e Chirurgia  
Corso di Laurea Magistrale a Ciclo Unico – Medicine and Surgery

CdS	Insegnamento	AA frequer	ritardo medio (gg)	#esami
MEDICINE AND SURGERY	APPLIED PHYSICS IN BIOENGINEERING	2024	122,33	12
MEDICINE AND SURGERY	BIOCHEMISTRY AND HUMAN PHYSIOLOGY II	2023	314,00	3
MEDICINE AND SURGERY	BIOCHEMISTRY AND HUMAN PHYSIOLOGY II	2024	5,00	1
MEDICINE AND SURGERY	BIOCHEMISTRY, PHARMACOLOGY AND HUMAN PHYSIOLOGY I	2022	367,48	27
MEDICINE AND SURGERY	BIOCHEMISTRY, PHARMACOLOGY AND HUMAN PHYSIOLOGY I	2023	262,65	31
MEDICINE AND SURGERY	BIOCHEMISTRY, PHARMACOLOGY AND HUMAN PHYSIOLOGY I	2024	53,53	19
MEDICINE AND SURGERY	CELL MORPHOLOGY AND FUNCTION	2022	121,38	39
MEDICINE AND SURGERY	CELL MORPHOLOGY AND FUNCTION	2023	111,42	59
MEDICINE AND SURGERY	CELL MORPHOLOGY AND FUNCTION	2024	21,33	49
MEDICINE AND SURGERY	ELECTROMAGNETIC FIELDS FOR MEDICINE - BASIS OF ELECTROMAGNETISM	2023	123,81	26
MEDICINE AND SURGERY	ELECTROMAGNETIC FIELDS FOR MEDICINE - BASIS OF ELECTROMAGNETISM	2024	75,67	43
MEDICINE AND SURGERY	FUNDAMENTALS OF BIOMECHANICS AND BIOMECHANICS I	2023	229,18	17
MEDICINE AND SURGERY	FUNDAMENTALS OF BIOMECHANICS AND BIOMECHANICS I	2024	84,09	11
MEDICINE AND SURGERY	FUNDAMENTALS OF COMPUTER SCIENCES	2023	78,69	26
MEDICINE AND SURGERY	FUNDAMENTALS OF COMPUTER SCIENCES	2024	55,60	48
MEDICINE AND SURGERY	Fundamentals of diagnostic imaging technology	2023	0,83	36
MEDICINE AND SURGERY	FUNDAMENTALS OF ELECTRICAL AND ELECTRONIC ENGINEERING	2024	28,00	2
MEDICINE AND SURGERY	FUNDAMENTALS OF EXPERIMENTAL PHYSICS AND CHEMISTRY	2022	151,42	45
MEDICINE AND SURGERY	FUNDAMENTALS OF EXPERIMENTAL PHYSICS AND CHEMISTRY	2023	105,33	63
MEDICINE AND SURGERY	FUNDAMENTALS OF EXPERIMENTAL PHYSICS AND CHEMISTRY	2024	54,75	52
MEDICINE AND SURGERY	FUNDAMENTALS OF MECHANICAL ENGINEERING	2024	137,00	6
MEDICINE AND SURGERY	HUMAN ANATOMY I	2022	299,65	34
MEDICINE AND SURGERY	HUMAN ANATOMY I	2023	191,50	36
MEDICINE AND SURGERY	HUMAN ANATOMY I	2024	172,33	3
MEDICINE AND SURGERY	HUMAN ANATOMY II	2023	203,33	18
MEDICINE AND SURGERY	HUMAN ANATOMY II	2024	17,17	24
MEDICINE AND SURGERY	MATHEMATICAL ANALYSIS AND GEOMETRY	2022	243,06	36
MEDICINE AND SURGERY	MATHEMATICAL ANALYSIS AND GEOMETRY	2023	129,04	55
MEDICINE AND SURGERY	MATHEMATICAL ANALYSIS AND GEOMETRY	2024	96,45	42
MEDICINE AND SURGERY	MEDICAL INFORMATICS - ELECTRONIC AND COMPUTER BIOENGINEERING	2023	132,78	27
MEDICINE AND SURGERY	MEDICAL INFORMATICS - ELECTRONIC AND COMPUTER BIOENGINEERING	2024	70,74	27
MEDICINE AND SURGERY	MEDICAL STATISTICS	2023	203,36	28
MEDICINE AND SURGERY	MEDICAL STATISTICS	2024	87,00	37
MEDICINE AND SURGERY	MICROBIOLOGY, IMMUNOLOGY AND TECHNICAL SCIENCES	2023	250,80	10
MEDICINE AND SURGERY	MICROBIOLOGY, IMMUNOLOGY AND TECHNICAL SCIENCES	2024	46,50	2
MEDICINE AND SURGERY	MONOGRAPHIC COURSE - BIOTECHNOLOGIES APPLIED TO PHARMACOLOGY	2022	9,08	40
MEDICINE AND SURGERY	MONOGRAPHIC COURSE - BIOTECHNOLOGIES APPLIED TO PHARMACOLOGY	2023	0,00	62
MEDICINE AND SURGERY	MONOGRAPHIC COURSE - MODERN TECHNIQUES FOR BIOMEDICAL RESEARCH:	2024	22,70	20
MEDICINE AND SURGERY	MONOGRAPHIC COURSE - STATISTICAL ANALYSIS OF HEALTH AND HEALTH CARE	2024	73,40	5
MEDICINE AND SURGERY	MONOGRAPHIC COURSE: BIOMEDICAL ENGINEERING LAB	2024	26,66	44
MEDICINE AND SURGERY	MONOGRAPHIC COURSE: CHALLENGES AND FUTURE DIRECTIONS IN PRECLINICAL	2024	18,88	59
MEDICINE AND SURGERY	MONOGRAPHIC COURSE: Foundations of the Scientific Method	2022	51,67	6
MEDICINE AND SURGERY	MONOGRAPHIC COURSE: Foundations of the Scientific Method	2023	15,00	8
MEDICINE AND SURGERY	MONOGRAPHIC COURSE: Foundations of the Scientific Method	2024	28,45	11
MEDICINE AND SURGERY	MONOGRAPHIC COURSE: INTRODUCTION TO BIOMEDICAL ENGINEERING	2022	6,86	51
MEDICINE AND SURGERY	MONOGRAPHIC COURSE: INTRODUCTION TO BIOMEDICAL ENGINEERING	2023	0,95	74
MEDICINE AND SURGERY	MONOGRAPHIC COURSE: INTRODUCTION TO BIOMEDICAL ENGINEERING	2024	18,93	55
MEDICINE AND SURGERY	MONOGRAPHIC COURSE: INTRODUCTION TO BIOMEDICAL SIGNAL PROCESSING	2024	32,86	22
MEDICINE AND SURGERY	Properties of Mesenchymal Stem Cells (MSCs) and main techniques for their isolation	2023	0,00	40
MEDICINE AND SURGERY	Recombinant DNA Technology	2024	30,22	9

Presidente del Corso: Prof Magi Simona

Dip. Scienze Biomediche e Sanità Pubblica - Università Politecnica delle Marche

Tel. 071 220 6040

Email: s.magi@univpm.it

Segreteria: Gestione Erogazione Didattica e Attività Professionalizzanti

Tel. 071 2206188 - 6047

Email [gedap.medicina@univpm.it](mailto:gedap.medicina@univpm.it)



Facoltà di Medicina e Chirurgia  
 Corso di Laurea Magistrale a Ciclo Unico – Medicine and Surgery

CFU	Disciplinamenta	AA	CFU teorici	CFU medic/presso AA1	CFU medic/presso AA2	CFU clinici
MEDICINE AND SURGERY	MEDICAL INFORMATICS - ELECTRONIC AND COMPUTER BIOENGINEERING	2022	25,8666666	25,4583333	2	24
MEDICINE AND SURGERY	MEDICAL INFORMATICS - ELECTRONIC AND COMPUTER BIOENGINEERING	2024	26,703703	26,703703	2	27
MEDICINE AND SURGERY	MEDICAL STATISTICS	2022	23,8848485	23,8848485	3	27
MEDICINE AND SURGERY	MEDICAL STATISTICS	2024	23,9285714	24,0000000	2	29
MEDICINE AND SURGERY	MICROBIOLOGY, IMMUNOLOGY AND TECHNICAL SCIENCES	2022	28,5	28,3333333	1	27
MEDICINE AND SURGERY	MICROBIOLOGY, IMMUNOLOGY AND TECHNICAL SCIENCES	2024	28,5	28,5	2	27
MEDICINE AND SURGERY	MONOGRAPHIC COURSE - BIOTECHNOLOGIES APPLIED TO PHARMACOLOGY	2022	29,951612	29,951612	8	24
MEDICINE AND SURGERY	MONOGRAPHIC COURSE - BIOTECHNOLOGIES APPLIED TO PHARMACOLOGY	2024	30	30	9	29
MEDICINE AND SURGERY	MONOGRAPHIC COURSE - MODERN TECHNIQUES FOR BIOMEDICAL RESEARCH: A PAPER DESCRIPTION APPROACH	2024	30	30	20	30
MEDICINE AND SURGERY	MONOGRAPHIC COURSE - STATISTICAL ANALYSIS OF HEALTH AND HEALTH CARE DATA	2022	19,5	19,5	3	17
MEDICINE AND SURGERY	MONOGRAPHIC COURSE - BIOMEDICAL ENGINEERING LAB	2022	25,0000000	25,0000000	4	24
MEDICINE AND SURGERY	MONOGRAPHIC COURSE - CHALLENGES AND FUTURE DIRECTIONS IN PRECLINICAL STUDIES FOR DRUG DEVELOPMENT	2024	29,2827118	29,2827118	5	29
MEDICINE AND SURGERY	MONOGRAPHIC COURSE - Foundations of the Scientific Method	2022	27,8181818	27,8181818	11	26
MEDICINE AND SURGERY	MONOGRAPHIC COURSE - Foundations of the Scientific Method	2024	23,75	23,75	1	23
MEDICINE AND SURGERY	MONOGRAPHIC COURSE - Foundations of the Scientific Method	2022	26,8333333	26,8333333	6	26
MEDICINE AND SURGERY	MONOGRAPHIC COURSE - INTRODUCTION TO BIOMEDICAL ENGINEERING	2022	28,7437437	28,7437437	2	27
MEDICINE AND SURGERY	MONOGRAPHIC COURSE - INTRODUCTION TO BIOMEDICAL ENGINEERING	2024	20,1818182	20,1818182	15	27
MEDICINE AND SURGERY	MONOGRAPHIC COURSE - INTRODUCTION TO BIOMEDICAL ENGINEERING	2022	20,25400106	20,24	5	24
MEDICINE AND SURGERY	MONOGRAPHIC COURSE - INTRODUCTION TO BIOMEDICAL SIGNAL PROCESSING	2024	25,4000000	25,4000000	2	23
MEDICINE AND SURGERY	OFA - FISCA E MATEMATICA	2022	2	2	2	2
MEDICINE AND SURGERY	OFA - MATHEMATICS AND PHYSICS	2022	30	30	30	30
MEDICINE AND SURGERY	OFA - MATHEMATICS AND PHYSICS	2024	30	30	30	30
MEDICINE AND SURGERY	OFA - MATHEMATICS AND PHYSICS	2024	3	3	3	3
MEDICINE AND SURGERY	OFA 2 CHEMISTRY	2022	2	2	2	2
MEDICINE AND SURGERY	PATHOLOGY	2024	0	0	0	0
MEDICINE AND SURGERY	PROFESSIONALIZING ACTIVITIES - FIRST YEAR	2022	24,2857143	24,3125	8	26
MEDICINE AND SURGERY	PROFESSIONALIZING ACTIVITIES - FIRST YEAR	2024	24,9454545	24,9454545	5	29
MEDICINE AND SURGERY	PROFESSIONALIZING ACTIVITIES - FIRST YEAR	2022	24,7142857	24,8461538	8	26
MEDICINE AND SURGERY	PROFESSIONALIZING ACTIVITIES - SECOND YEAR	2022	25,8628689	26,5833333	2	24
MEDICINE AND SURGERY	PROFESSIONALIZING ACTIVITIES - SECOND YEAR	2024	26,36714286	26,36714286	26	26
MEDICINE AND SURGERY	PROFESSIONALIZING ACTIVITIES - THIRD YEAR	2022	27,7272727	27,7272727	2	24
MEDICINE AND SURGERY	Progress of Mesenchymal Stem Cells (MSCs) and their techniques for their isolation and characterization	2022	28,375	28,375	4	24
MEDICINE AND SURGERY	Recombinant DNA Technology	2024	20,4444444	20,4444444	3	17

CFU	Disciplinamenta	AA	CFU teorici	CFU medic/presso AA1	CFU medic/presso AA2	CFU clinici
MEDICINE AND SURGERY	APPLIED PHYSICS IN BIOENGINEERING	2022	25,0833333	25,0833333	1	24
MEDICINE AND SURGERY	BIOCHEMISTRY AND HUMAN PHYSIOLOGY II	2022	27,6666666	27	1	26
MEDICINE AND SURGERY	BIOCHEMISTRY AND HUMAN PHYSIOLOGY II	2024	30	30	1	29
MEDICINE AND SURGERY	BIOCHEMISTRY, PHARMACOLOGY AND HUMAN PHYSIOLOGY I	2022	28,8451812	27,4867143	3	25
MEDICINE AND SURGERY	BIOCHEMISTRY, PHARMACOLOGY AND HUMAN PHYSIOLOGY I	2024	26,1111111	26,25	2	26
MEDICINE AND SURGERY	BIOCHEMISTRY, PHARMACOLOGY AND HUMAN PHYSIOLOGY I	2022	28,5789474	28,5789474	1	28
MEDICINE AND SURGERY	CELL MORPHOLOGY AND FUNCTION	2022	23,5084745	24,1666666	5	23
MEDICINE AND SURGERY	CELL MORPHOLOGY AND FUNCTION	2024	24,7437437	24,7437437	6	28
MEDICINE AND SURGERY	CELL MORPHOLOGY AND FUNCTION	2022	24,9743589	25,3333333	3	26
MEDICINE AND SURGERY	ELECTROMAGNETIC FIELDS FOR MEDICINE - BASIS OF ELECTROMAGNETISM	2022	23,4418804	23,4418804	4	24
MEDICINE AND SURGERY	ELECTROMAGNETIC FIELDS FOR MEDICINE - BASIS OF ELECTROMAGNETISM	2024	24,7070707	24,65	2	26
MEDICINE AND SURGERY	FUNDAMENTALS OF BIOMECHANICS AND BIOMECHANICS I	2022	24,8823529	25,8363636	1	24
MEDICINE AND SURGERY	FUNDAMENTALS OF BIOMECHANICS AND BIOMECHANICS I	2024	25,0000000	26,0000000	1	24
MEDICINE AND SURGERY	FUNDAMENTALS OF COMPUTER SCIENCES	2022	28,7083333	28,7083333	6	24
MEDICINE AND SURGERY	FUNDAMENTALS OF COMPUTER SCIENCES	2024	20,3461538	20,3461538	2	20
MEDICINE AND SURGERY	Fundamentals of diagnostic medical technology	2022	26,5977777	26,5977777	3	26
MEDICINE AND SURGERY	FUNDAMENTALS OF ELECTRICAL AND ELECTRONIC ENGINEERING	2022	26	26	2	26
MEDICINE AND SURGERY	FUNDAMENTALS OF EXPERIMENTAL PHYSICS AND CHEMISTRY	2022	21,7230250	21,9018304	6	21
MEDICINE AND SURGERY	FUNDAMENTALS OF EXPERIMENTAL PHYSICS AND CHEMISTRY	2024	21,8148148	21,8148148	15	25
MEDICINE AND SURGERY	FUNDAMENTALS OF EXPERIMENTAL PHYSICS AND CHEMISTRY	2022	22,8868686	23,0258410	6	26
MEDICINE AND SURGERY	FUNDAMENTALS OF MECHANICAL ENGINEERING	2022	28,5	28,5	3	25
MEDICINE AND SURGERY	HUMAN ANATOMY I	2022	27,1891892	27,0476190	3	24
MEDICINE AND SURGERY	HUMAN ANATOMY I	2024	26,3142857	27,5	3	26
MEDICINE AND SURGERY	HUMAN ANATOMY I	2024	28,5	28,5	4	28
MEDICINE AND SURGERY	HUMAN ANATOMY II	2024	28,625	28,625	2	26
MEDICINE AND SURGERY	HUMAN ANATOMY II	2022	26,4736842	27,7272727	1	26
MEDICINE AND SURGERY	HUMAN ANATOMY II	2022	27	27	1	27
MEDICINE AND SURGERY	MATHEMATICAL ANALYSIS AND GEOMETRY	2022	24,7000000	24,65	1	24
MEDICINE AND SURGERY	MATHEMATICAL ANALYSIS AND GEOMETRY	2024	24,595238	24,595238	4	24
MEDICINE AND SURGERY	MATHEMATICAL ANALYSIS AND GEOMETRY	2022	23,4054054	23,8785714	3	26
MEDICINE AND SURGERY	MEDICAL AND SURGICAL SEMIOTICS AND PATHOLOGY	2024	3	3	3	3

Presidente del Corso: Prof Magi Simona

Dip. Scienze Biomediche e Sanità Pubblica - Università Politecnica delle Marche

Tel. 071 220 6040

Email: s.magi@univpm.it

Segreteria: Gestione Ergazione Didattica e Attività Professionalizzanti

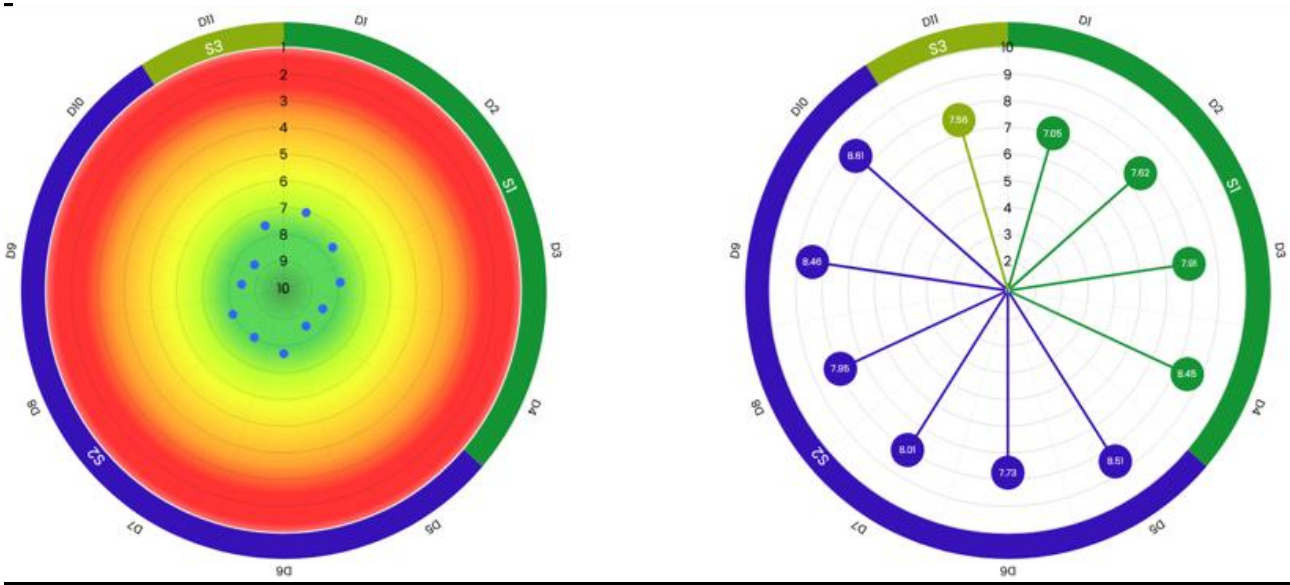
Tel. 071 2206188 - 6047

Email [gedap.medicina@univpm.it](mailto:gedap.medicina@univpm.it)



Facoltà di Medicina e Chirurgia  
 Corso di Laurea Magistrale a Ciclo Unico – Medicine and Surgery

Professor Magi continues by showing the teaching evaluation questionnaires – student side, of the I semester A.Y. 2024-2025. The sheets were 595 in total.



DOMANDA	RISPOSTE	NON RISPOSTE	P1	P2	Q1	ME	Q3	MEDIA	SQM	L1	L2	(2024/2025) DIPARTIMENTO	MEDIA A.A. PREC.
D1	595	--	32,61%	67,39%	5,000	7,000	10,000	7,05	2,629	6,84	7,26	7,36	7,88
D2	595	--	17,48%	82,52%	7,000	7,000	10,000	7,82	2,237	7,44	7,80	7,37	7,85
D3	595	--	14,96%	85,04%	7,000	7,000	10,000	7,81	2,162	7,73	8,08	7,47	8,08
D4	595	--	10,76%	89,24%	7,000	10,000	10,000	8,45	2,022	8,29	8,62	7,87	8,38
D5	595	--	8,24%	91,76%	7,000	10,000	10,000	8,51	1,959	8,30	8,67	8,03	8,68
D6	595	--	17,98%	82,02%	7,000	7,000	10,000	7,73	2,364	7,54	7,92	7,52	8,28
D7	595	--	15,28%	84,72%	7,000	7,000	10,000	8,01	2,294	7,83	8,18	7,67	8,33
D8	396	199	15,40%	84,60%	7,000	7,000	10,000	7,95	2,306	7,72	8,18	7,47	8,32
D9	595	--	5,7%	94,29%	7,000	10,000	10,000	8,45	1,825	8,31	8,61	7,87	8,52
D10	595	--	7,73%	92,27%	7,000	10,000	10,000	8,45	1,981	8,45	8,77	7,99	8,98
D11	595	--	23,70%	76,30%	7,000	7,000	10,000	7,98	2,282	7,38	7,74	7,61	8,14

Overall, each dimension received 595 responses, except for D8, which shows 396 responses and 199 non-responses. The percentage of positive responses (P2) is generally high across all dimensions,

Presidente del Corso: Prof Magi Simona  
 Dip. Scienze Biomediche e Sanità Pubblica - Università Politecnica delle Marche  
 Tel. 071 220 6040  
 Email: s.magi@univpm.it  
 Segreteria: Gestione Erogazione Didattica e Attività Professionalizzanti  
 Tel. 071 2206188 - 6047  
 Email [gedap.medicina@univpm.it](mailto:gedap.medicina@univpm.it)



Facoltà di Medicina e Chirurgia  
Corso di Laurea Magistrale a Ciclo Unico – Medicine and Surgery

mostly above 80%, with particularly high values for D2, D4, D5, D6, D9, and D10 (around or above 90%). D1 shows the lowest percentage of positive responses (67.39%), while D3 and D8 are also slightly lower compared to the others.

The mean scores are consistently high, ranging approximately between 7.56 and 8.61 on a scale from 0 to 10. The highest average score appears in D10 (8.61), followed by D5 and D9 (both above 8.4). The lowest average score is in D6 (7.73). Standard deviation values are relatively low (around 1.8–2.6), indicating limited variability in responses.

The department averages for 2024/2025 are very close to the calculated means, confirming consistency in the results. In most cases, the current averages are slightly higher than the previous year's averages, suggesting a small overall improvement.

SISValDidat - Sistema Informativo Statistico per la Valutazione della Didattica													
Descrizione	Schede	Nulla	D1	D2	D3	D4	D5	D6	D7	D8	D9	D10	D11
FUNDAMENTALS OF EXPERIMENTAL PHYSICS AND CHEMISTRY - Experimental Physics (W001879_W001880_NO)	69	0	7,46	7,28	7,49	8,48	7,75	7,22	6,99	7,23	8,26	7,99	7,3
FUNDAMENTALS OF EXPERIMENTAL PHYSICS AND CHEMISTRY - Chemical Basis of Technologies (W001879_W001881_NO)	69	0	8,38	8,07	8,51	8,48	8,81	8,49	8,9	8,11	8,8	9,14	8,91
MATHEMATICAL ANALYSIS AND GEOMETRY - Mathematical Analysis (W001882_W001883_NO)	58	0	6,64	7,88	8,4	9,28	9,05	7,93	8,48	7,97	8,98	9,33	7,29
MATHEMATICAL ANALYSIS AND GEOMETRY - Geometry (W001882_W001884_NO)	60	0	6,3	7,77	8,28	9,1	9,05	7,67	8,3	8,25	8,88	9,17	6,98
MEDICAL STATISTICS (W001890_W001890_NO)	52	0	7,37	7,4	7,56	8,19	8,48	7,13	7,85	6,78	8,38	8,08	7,54
FUNDAMENTALS OF BIOMECHANICS AND BIOMECHANICS I - Mechanics Applied to Machines (W001891_W001892_NO)	25	0	8	8,72	8,16	8,52	8,84	8,84	9,2	9,07	8,72	8,64	8,2
FUNDAMENTALS OF BIOMECHANICS AND BIOMECHANICS I - Industrial Bioengineering (W001891_W001893_NO)	25	0	7	7,6	7,68	8,52	8,6	7,92	7,36	9,11	8,36	8,84	7,72
FUNDAMENTALS OF COMPUTER SCIENCES (W001894_W001894_NO)	51	0	6,86	8,16	8,39	8,57	8,16	8,37	8,29	8,22	8,41	8,69	7,75
ELECTROMAGNETIC FIELDS FOR MEDICINE - BASIS OF ELECTROMAGNETISM (W001895_W001895_NO)	50	0	6,96	8,36	8,36	8,72	9	8,24	8,54	8	8,82	9,06	8
MEDICAL INFORMATICS - ELECTRONIC AND COMPUTER BIOENGINEERING (W001896_W001896_NO)	52	0	6,13	7,25	6,85	7,12	8,25	6,31	6,62	7,86	7,46	6,75	6,54
APPLIED PHYSICS IN BIOENGINEERING - Electronic and Computer Bioengineering (W001906_W001907_NO)	16	0	6,88	6,19	7,19	8,19	8,19	6,88	7,44	7,4	7,69	8,94	6,75
APPLIED PHYSICS IN BIOENGINEERING - Electronics (W001906_W001908_NO)	16	0	5,06	5,94	6,06	8	6,88	6,5	6,25	7,5	8	9,31	6,56
APPLIED PHYSICS IN BIOENGINEERING - Applied Physics (W001906_W001909_NO)	16	0	7,88	6,44	7,81	8,06	8,25	7,19	7,75	7,5	8,31	8,88	7,56
FUNDAMENTALS OF MECHANICAL ENGINEERING - Telecommunications (W001913_W001914_NO)	12	0	6,25	6,58	7,33	7,83	8,75	8,25	8,5		8	8,5	7,08
FUNDAMENTALS OF MECHANICAL ENGINEERING - Automatics (W001913_W001915_NO)	12	0	6,25	6,42	8,08	8,08	8,75	8,75	9	8,5	8,25	8,75	7,5
FUNDAMENTALS OF MECHANICAL ENGINEERING - Mechanics Applied to Machines (W001913_W001916_NO)	12	0	8,25	8,08	8,58	8,5	8,33	9	9,25	9,1	8,5	8,75	8,58

Professor Magi continues by showing the teaching evaluation questionnaires – professor side, of the I semester A.Y. 2024-2025. The sheets were 5 in total.

Presidente del Corso: Prof Magi Simona

Dip. Scienze Biomediche e Sanità Pubblica - Università Politecnica delle Marche

Tel. 071 220 6040

Email: s.magi@univpm.it

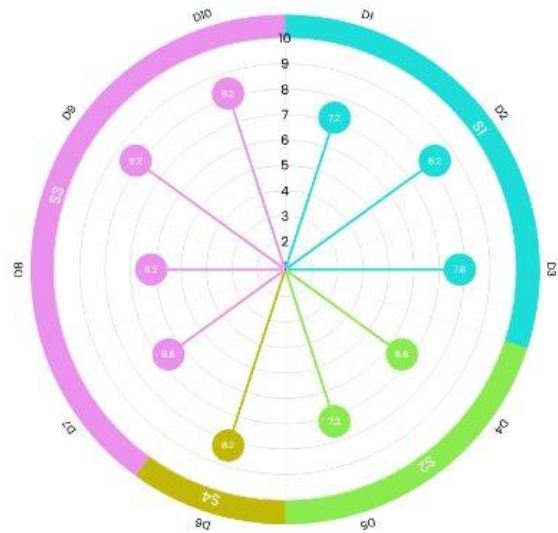
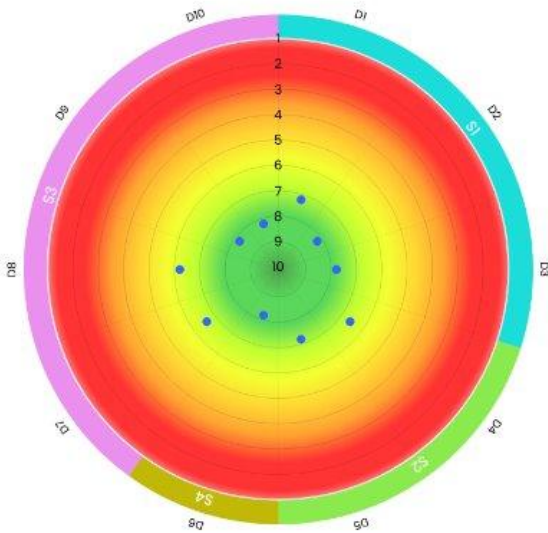
Segreteria: Gestione Erogazione Didattica e Attività Professionalizzanti

Tel. 071 2206188 - 6047

Email: [gedap.medicina@univpm.it](mailto:gedap.medicina@univpm.it)



Facoltà di Medicina e Chirurgia  
 Corso di Laurea Magistrale a Ciclo Unico – Medicine and Surgery



Domanda 1: Il carico di studio degli insegnamenti previsti nel periodo di riferimento è accettabile?  
 Domanda 2: L'organizzazione complessiva (orario, esami, intermedi e finali) degli insegnamenti ufficialmente previsti nel periodo di riferimento (bimestre, trimestre, semestre, ecc.) è accettabile?  
 Domanda 3: L'orario delle lezioni degli insegnamenti previsti nel periodo di riferimento è stato congegnato in modo tale da consentire una frequenza e una attività di studio individuale degli studenti adeguate?  
 Domanda 4: Le aule in cui si sono svolte le lezioni sono adeguate (si vede, si sente, si trova posto)?  
 Domanda 5: I locali e le attrezzature per lo studio e le attività didattiche integrative (biblioteche, laboratori, ecc.) sono adeguati?  
 Domanda 6: Il servizio di supporto fornito dagli uffici di segreteria è stato soddisfacente?  
 Domanda 7: Le conoscenze preliminari possedute dagli studenti frequentanti sono risultate sufficienti per la comprensione degli argomenti trattati a lezione e previsti nel programma d'esame?  
 Domanda 8: Sono previste modalità di coordinamento sui programmi degli insegnamenti previsti nel periodo di riferimento?  
 Domanda 9: L'illustrazione delle modalità di esame è stata recepita in modo chiaro?  
 Domanda 10: Si ritiene complessivamente soddisfatto/a dell'insegnamento svolto?

DOMANDA	RISPOSTE	NON RISPOSTE	P1	P2	Q1	ME	Q3	MEDIA	SQM	L1	L2	(2024/2026) DIPARTIMENTO	MEDIA A.A. PREC.
D1	5	---	20,00%	80,00%	7,000	7,000	7,000	7,20	1,789	5,63	8,77	8,38	8,60
D2	5	---	---	100,00%	7,000	7,000	10,000	8,20	1,643	6,76	9,64	8,49	8,67
D3	5	---	20,00%	80,00%	7,000	7,000	10,000	7,60	2,168	5,90	9,70	8,25	7,08
D4	5	---	20,00%	80,00%	7,000	7,000	7,000	6,60	2,881	4,07	9,13	8,87	7,83
D5	5	---	20,00%	80,00%	7,000	7,000	7,000	7,20	1,789	5,63	8,77	8,49	7,08
D7	5	---	20,00%	80,00%	7,000	7,000	7,000	6,60	0,894	5,82	7,38	7,25	6,33
D8	5	---	40,00%	60,00%	5,000	7,000	7,000	8,20	1,095	5,24	7,16	7,68	7,08
D9	5	---	---	100,00%	7,000	7,000	10,000	8,20	1,643	6,76	9,64	9,40	8,60
D10	5	---	---	100,00%	7,000	7,000	10,000	8,20	1,643	6,76	9,64	8,89	7,00
D6	5	---	---	100,00%	7,000	7,000	10,000	8,20	1,643	6,76	9,64	9,13	8,60

The values range approximately from 6.6 to 8.7. The highest score appears in D5 (around 8.7), followed by D7 and D9 (above 8.2). The lowest score is recorded in D4 (around 6.6). The dimensions in section S1 (D1–D3) show solid results between roughly 7.2 and 8.2. Section S2 (D4–D6) presents

Presidente del Corso: Prof Magi Simona

Dip. Scienze Biomediche e Sanità Pubblica - Università Politecnica delle Marche

Tel. 071 220 6040

Email: s.magi@univpm.it

Segreteria: Gestione Erogazione Didattica e Attività Professionalizzanti

Tel. 071 2206188 - 6047

Email [gedap.medicina@univpm.it](mailto:gedap.medicina@univpm.it)



slightly more variation, including the lowest value. Section S3 (D7–D9) shows strong and consistent performance, while S4 (D10) also records a relatively high score. Overall, the charts highlight good and balanced performance across all ten dimensions, with only moderate differences between the highest and lowest scores.

### Improvement actions

The President informs that the Quality Assurance Group, which met the 4th of November 2025, proposed the following improvement actions for approval:

Numero progressivo della AM/AC nell'anno di riferimento	Data di apertura dell'azione	Descrizione della AM/AC individuata	Soggetto responsabile di realizzare l'azione	Arco di tempo o scadenza prevista per l'attuazione dell'azione individuata	Soggetto/i responsabile di verificare che l'azione sia stata attuata e sia risultata efficace	Indicatore per verificare il grado di efficacia dell'AM/AC e relativo target	Arco di tempo o scadenza prevista per la verifica dell'efficacia dell'azione attuata
1/2025	Novembre 2025	Richiesta di tutor (studenti/dottorandi) afferenti alla Facoltà di Ingegneria al fine di supportare gli studenti con esercitazioni di materie di base	Tutor incaricati con il supporto dell'amministrazione (ufficio Presidenza di Medicina)	ott-26	RQ CDS/gruppo di riesame	incremento tasso di superamento esami ingegneristici (+5%)	01-dic-26
2/2025	Novembre 2025	Mappatura dei tutor che saranno coinvolti nel seguire le attività degli studenti in corsia	Presidente del CdS e ufficio Presidenza di Medicina	feb-26	RQ CDS/gruppo di riesame	% <u>soddisfazione</u> degli studenti	lug-26
3/2025	Novembre 2025	Inserimento Ingegneria Clinica Ospedale Torrette nella rete formativa	Presidente del CdS e ufficio Presidenza di Medicina	feb-26	RQ CDS/gruppo di riesame	% studenti che scelgono questa struttura per frequenza volontaria	lug-26

Moreover, a modify of the curriculum structure can be foreseen in order to overcome the evident critical issues that have affected the program, particularly in the current academic year.

#### 4. Didactic Activity

No points on the agenda.

#### 5. Student Practises

No points on the agenda.

#### 6. Any other business

Presidente del Corso: Prof Magi Simona

Dip. Scienze Biomediche e Sanità Pubblica - Università Politecnica delle Marche

Tel. 071 220 6040

Email: s.magi@univpm.it

Segreteria: Gestione Erogazione Didattica e Attività Professionalizzanti

Tel. 071 2206188 - 6047

Email [gedap.medicina@univpm.it](mailto:gedap.medicina@univpm.it)



Facoltà di Medicina e Chirurgia  
Corso di Laurea Magistrale a Ciclo Unico – Medicine and Surgery

No points on the agenda.

Having nothing more to discuss, the Study Course Council closes at 1.58 p.m.

Signed by  
Nadia Canonico  
Reporting and administration support

Signed by  
Professor Simona Magi  
President of the Medicine and Surgery Course

NOME 25-26	COGNOME 25-26				
HENRY ITALO FEMI	ADENUSI	RUAF	P	<b>Students A.Y. 2025-2026</b>	
ALESSANDRO	BALDINI	CU		terzo anno:	
PAMELA	BARBADORO	PO		<a href="mailto:Gouzay.Ozverir@studenti.univpm.it">Gouzay Ozverir &lt;S1119437@studenti.univpm.it&gt;</a>	
DEVIS	BENFAREMO	RU	P	<a href="mailto:Mayar.Bezzai@studenti.univpm.it">Mayar Bezzai &lt;S1119452@studenti.univpm.it&gt;</a>	P
MARTINA	BONIFAZI	PO		quarto anno:	
ANDREA	BRENCIANI	PA	P	<a href="mailto:Jayottri.Acharjee@studenti.univpm.it">Jayottri Acharjee &lt;S1113335@studenti.univpm.it&gt;</a>	P
FRANCESCO PAOLO	BUSARDO'	PO		<a href="mailto:Hagy.Daniel.Dor@studenti.univpm.it">Hagy Daniel Dor - S1112354@studenti.univpm.it</a>	P
JEREMY	CARLIER	RU			
MICHELA	CASELLA	PA	P		
PASQUALINA	CASTALDO	PA	P		
GEORGIA	COLLELUORI	RU	P		
ALESSANDRA	FILOSA	RU			
GIANLUCA	FULGENZI	RU			
ANDREA BENEDETTO	GALOSI	PO			
MICHELE	GASPARINI	CU			
ROSARIA	GESUITA	PO	P		
GILBERTA	GIACCHETTI	PA	G		
ALESSANDRA	GIULIANI	PA	P		
MATTEO	GIULIETTI	PA	P		
GAIA	GOTERI	PO			
FEDERICO	GUERRA	PA	G		
SHAHRAM YASER	KORDASTI	PA			
VINCENZO	LARICCIA	PA			
EMILIANO	LAUDADIO	PAAF			
GIOVANNI	LEZOCHÉ	PA	G		
SIMONA	MAGI	PA	P		

MARCO	MALAVOLTA	RU	P
PIETRO GIORGIO	MALVINDI	PA	P
LORENZO	MANONI	RUAF	
ILARIA	MARCANTONI	RUAF	
ARIN	MARCHESI	PA	P
MARCO	MARZIONI	PA	
MONICA	MATTIOLI BELMONTE CIMA	PO	P
FEDERICO	MEI	PA	P
STEFANO	MENZO	PO	
FEDERICO	MOCCHIGIANI	PA	
MICAELA	MORETTINI	PAAF	P
GIANLUCA	MORONCINI	PO	P
GIANLUCA	MORRONI	RU	G
MONICA	ORCIANI		P
SIMONE	ORCIONI	POAF	
LORENZO	PALMA	PAAF	P
GIACOMO	PALMIERI	PAAF	G
LUCIA	PEPA	RUAF	P
AGNESE	PIERSANTI	CU	
SIMONE	PIFFERI	PA	P
FRANCESCO	PIVA	PA	P
ANDREA	RANGHINO	PA	
MARIA RITA	RIPPO	PO	P
LEILA BIANCA LAURA	ROZZI	CU	P
JACOPO	SABBATINELLI	PA	P
GIANMARIA	SALVIO	RU	P
DAVIDE	SARTINI	PA	P

RICCARDO	SARZANI	PO	
AGNESE	SECONDO	PO	P
ILENIA	SEVERI	RU	P
FRANCESCO	SPANNELLA	RU	
ANDREA	TIGRINI	RUAF	P
ARIANNA	VIGNINI	PA	P
GIORGIA	FATTORINI		uditrice
MARIA GABRIELLA	CERAVOLO		uditrice
ROBERTA	DOMIZI		uditrice
ALIDA	MAZZOLI		uditrice